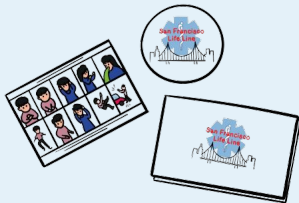


SAN FRANCISCO LIFE LINE



San Francisco Life Line is a resource for First Responders to allow for timely access to important healthcare information.

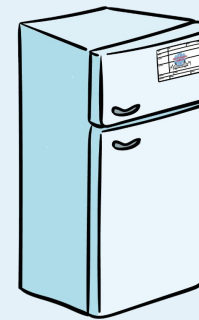
The resource includes a plastic case holder with magnetic mounts to be placed on the patient's refrigerator. Within the plastic case holder is a document containing pertinent identification and healthcare information, a useful infographic for identifying the reason for the call for medical aid, and a place to insert advanced health directives.



A First Responder will be alerted to look for the Life Line on the fridge after viewing a Lifeline Sticker on the front door.

HOW IT WORKS...

The First Responder will locate the Life Line on the patient's fridge and acquire information. The translation tool can be utilized as needed.



The First Responder will replace the card on the fridge after obtaining information.